



# High Pressure Cleaning Systems

[www.streamline.systems](http://www.streamline.systems)



# High Pressure Cleaning Systems



**Pressure washing at height has a key part in all external cleaning regimes and in this current economic climate, with everyone vying for business and trying to draw custom in to their shops, outward appearance is everything. They say, 'you never get a second chance to make a first impression'.**

Reliable pressure washers are a must and few would argue that the petrol driven Honda pressure washers certainly tick this box. Pressure washing is an ideal add-on to any contract window cleaning operation and as specialists in van installations, and to meet the needs of the window cleaning/pressure washing market we have designed a system to utilise reject water from the reverse osmosis window cleaning systems which traditionally waste up to 50% of the window cleaner's water. This is then utilized for pressure washing instead, as water purity is of no consequence in this application. Such systems are the way forward and help to maximise water usage and reduce water wastage, a big plus point as a sustainability issue.

The contract cleaner could actually use this as part of his marketing too, especially when approaching blue chip companies, as sustainability issues are at the front of peoples' minds these days. A new range of reliable Honda powered pressure washers mounted on trolleys for easy manoeuvrability and capable of meeting the demands of almost any outdoor cleaning task.

All units come equipped with 10 metre high pressure hose, 3 metre suction hose with weighted filter, gun and lance with variable angle nozzle head on a robust metal trolley with heavy duty pneumatic wheels. Low pressure chemical injector supplied as standard with all models.



## Honda Powered High Pressure Washer

150 Bar Honda powered cold water Pressure Washer, mounted on a robust steel trolley.

This is a versatile and rugged little work horse, capable of meeting the most demanding outdoor tasks on hand such as cleaning of gutters, cladding, wall surfaces, signs, decking, patios, paths and driveways, to name a few. The well-proven Honda GX160 petrol engine coupled to a well-known Interpump triple plunger pump, along with industrial grade single lance, hose and other hardware means that this machine is your reliable number one for commercial work, day in and day out. The compact yet robust trolley enables this machine to be easily transported to and from site.

### Specifications & Benefits include

- GX160 Honda engine, recoil start
- Interpump triple plunger pump with built-in unloader valve - for smooth and reliable operation
- 36" Heavy duty steel chrome single lance with quick connector - for easy nozzle changes
- 10-metre High pressure twin wire rubber hose for industrial use and longevity
- 3-metre 19mm Suction hose with weighted filter attached - for drawing from a sump
- Chemical injector on unloader with small filter attached - for drawing in detergents
- Assortment of 5 different nozzles, 15deg, 25deg, 40deg, pencil and foaming tips - for every eventuality
- Heavy duty metal trolley with 10" flat-free wheels - for robustness and great manoeuvrability



**Cold Water**

Key Features:

**150Bar** Maximum Rated Pressure  
(2,100 psi)

**12Lpm** Maximum Rated Flow  
(2.64 gpm)

**60°C** Maximum Rated Temperature  
(140°F)

Dimensions:

Height	Length	Width	Weight
			
90cm	85cm	55cm	45.2kg

PART NO

**HP-T12150PHR** Recoil start

### Recommended Accessories

Carbon Power Pole - V2 4-section

**HP-HX4-COMP**

300mm Handheld Hard Surface Cleaner

**HP-HSC300**



## Honda Powered High Pressure Washer

207 Bar Honda powered cold water Pressure Washer, mounted on a robust steel trolley

This is a versatile and rugged mid-sized work horse, capable of meeting the most demanding outdoor tasks on hand such as cleaning of gutters, cladding, wall surfaces, signs, decking, patios, paths and driveways, to name a few. The well-proven Honda GX270 petrol engine coupled via a gearbox to a well-known Interpump triple plunger pump, along with industrial grade single lance, hose and other hardware means that this machine is your reliable number one for commercial work, day in and day out. The compact yet robust trolley enables this machine to be easily transported to and from site.

### Specifications & Benefits include

- GX270 Honda engine, recoil start
- Comet geared triple plunger pump with built-in unloader valve - for smooth & reliable operation
- 36" Heavy duty steel chrome single lance with quick connector - for easy nozzle changes
- 10-metre High pressure twin wire rubber hose - for industrial use and longevity
- 3-metre 19mm Suction hose with weighted filter attached - for drawing from a sump
- Chemical injector on unloader with small filter attached - for drawing in detergents
- Assortment of 5 different nozzles, 15deg, 25deg, 40deg, pencil and foaming tips - for every eventuality
- Heavy duty metal trolley with 13" flat-free wheels - for robustness and great manoeuvrability



**Cold Water**

Key Features:

**207Bar** Maximum Rated Pressure  
(3,000 psi)

**15Lpm** Maximum Rated Flow  
(3.78 gpm)

**60°C** Maximum Rated Temperature  
(140°F)

Dimensions:

Height	Length	Width	Weight
			
100cm	110cm	60cm	65.2kg

PART NO

**HP-T15207PHR-G** Recoil start

### Recommended Accessories

Carbon Power Pole - V2 7-section

**HP-HX7-COMP**

460mm Hammerhead Hard Surface Cleaner with Stainless Steel Castor Wheels

**HP-HSC460**



## Honda Powered High Pressure Washer

276 Bar Honda powered cold water Pressure Washer, mounted on a robust steel trolley

This is a versatile and heavy-duty work horse, capable of meeting the most demanding outdoor tasks on hand such as cleaning of gutters, cladding, wall surfaces, signs, decking, patios, paths and driveways, to name a few. The well-proven Honda GX390 petrol engine coupled via a gearbox to a well-known Comet triple plunger pump, along with industrial grade single lance, hose and other hardware means that this machine is your reliable number one for commercial work, day in and day out. The compact yet robust trolley enables this machine to be easily transported to and from site.

### Specifications & Benefits include

- GX390 Honda engine, recoil start
- Comet geared triple plunger pump with built-in unloader valve - for smooth & reliable operation
- 36" Heavy duty steel chrome single lance with quick connector - for easy nozzle changes
- 10-metre High pressure twin wire rubber hose - for industrial use and longevity
- 3-metre 19mm Suction hose with weighted filter attached - for drawing from a sump
- Chemical injector on unloader with small filter attached - for drawing in detergents
- Assortment of 5 different nozzles, 15deg, 25deg, 40deg, pencil and foaming tips - for every eventuality
- Heavy duty metal trolley with 13" flat-free wheels - for robustness and great manoeuvrability



**Cold Water**





Key Features:

**276Bar** Maximum Rated Pressure  
(4,000 psi)

**16Lpm** Maximum Rated Flow  
(4.4 gpm)

**60°C** Maximum Rated Temperature  
(140°F)

Dimensions:

Height	Length	Width	Weight
			
100cm	110cm	60cm	65.2kg

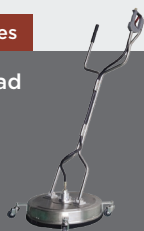
**PART NO**

**HP-T16276PHR-G** Recoil start

### Recommended Accessories

550mm Hammerhead Stainless Steel Hard Surface Cleaner with castors

**HP-HSC550-SS**



400mm 4-nozzle Broom On Castors

**HP-WB04**



## Honda Powered Pressure Washer

276 Bar Honda powered cold water Pressure Washer, mounted on a robust stainless steel cage

This high pressure washer cage has similar features to the HP-T16276PHR-G and is perfect for portable high-pressure washing needs. Once connected to a water source, with its mounted hose reel and lance this unit can be deployed quickly. The durable stainless steel cage protects the pressure washer and makes loading and transportation easy.

### Features

- Stainless steel frame design
- Fitted with a HP-HRM050 hose reel and 15-metres of hose (quick release option available)
- Reliable Honda GX390 engine
- Geared triple plunger pump with unloader valve
- Powerful pump & engine combination
- Lance & nozzle holders incorporated in frame

**With Hose Reel:**

589mm (W) x 597mm (L) x 897mm(H)

**With Quick Release Hose Reel:**

589mm (W) x 597mm (L) x 920mm(H)







**Cold Water**

**276Bar** Maximum Rated Pressure

**16Lpm** Maximum Rated Flow

**50°C** Maximum Fluid Temperature

Dimensions:

Height	Length	Width	Weight
			
57.1cm	59.7cm	58.9cm	65kg

**PART NO**

**HP-C16276PHR-H** Honda Powered Cage Pressure Washer, 16 Lpm 276 Bar

### Recommended Accessories

300mm Handheld Hard Surface Cleaner

**HP-HSC300**



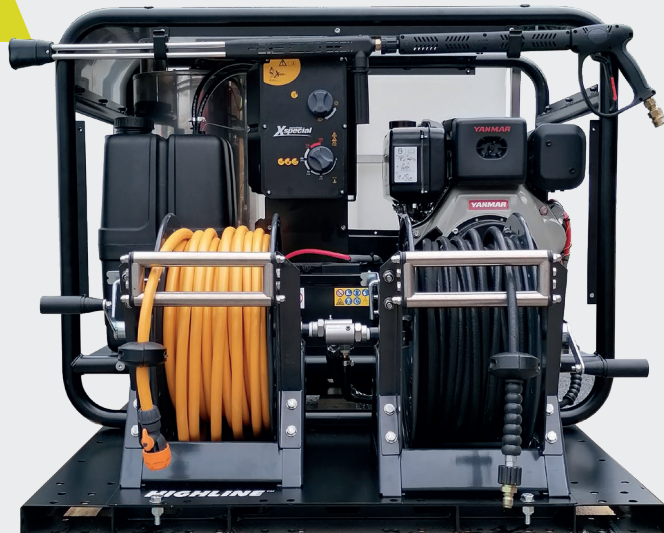
Drain Cleaning Valve Kit

**HP-GP2100358**





New for  
2022



# 350L

Visit our website for the latest prices  
[www.streamline.systems](http://www.streamline.systems)

A Hotcube, 350Ltr tank with stainless frame and 2 x 150A hose reels (1 for filling and one for distribution) on a painted galvanised skid. This allows the user to forklift a pre-assembled hot pressure washing kit into their van. The skid is designed to allow the user to choose between temporary fixings or bolting it into their van.

## Features

- Slots for Forklifting
- Plenty of mounting holes
- 350Ltr Capacity
- Hot pressure washing.
- Fill function
- Single user.
- All Hotcube Features.
- 2 x 150A Hose Reels

## Benifits

- Pre-built and plumbed kit ready for installation.
- Can be permanently or temporarily installed into a van.

## Weights & Dimensions

Height



970mm

Length



1900mm

Width



1200mm

Weight

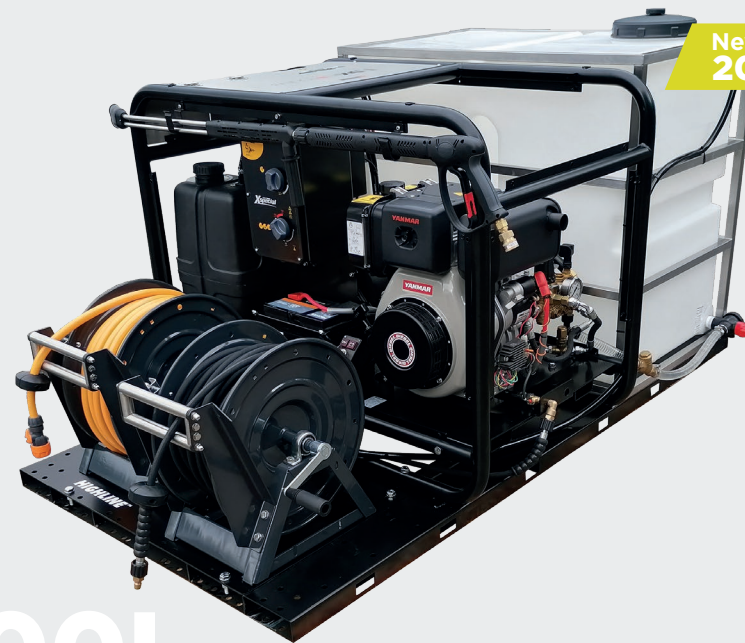


406kg

PART NO

HP-SKD350-15207DHE-150H

New for  
2022



# 500L

A Hotcube, 500Ltr tank with stainless frame and 2 x 150A hose reels (1 for filling and one for distribution) on a painted galvanised skid. This allows the user to forklift a pre-assembled hot pressure washing kit into their van. The skid is designed to allow the user to choose between temporary fixings or bolting it into their van.

## Features

- Slots for Forklifting
- Plenty of mounting holes
- 500Ltr Capacity
- Hot pressure washing.
- Fill function
- Single user.
- All Hotcube Features.
- 2 x 150A Hose Reels

## Benifits

- Pre-built and plumbed kit ready for installation.
- Can be permanently or temporarily installed into a van.

## Weights & Dimensions

Height



970mm

Length



2000mm

Width



1200mm

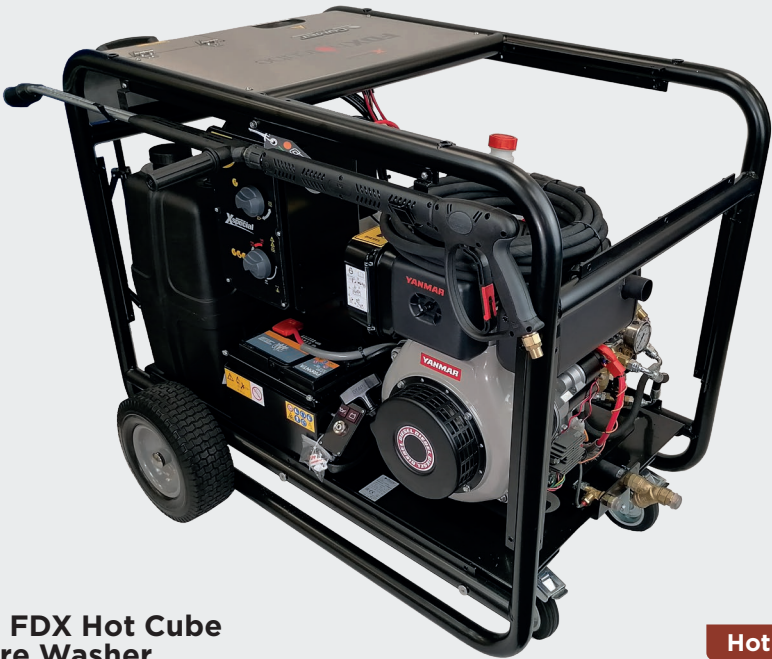
Weight



417.7kg

PART NO

HP-SKD500-15207DHE-150H



Comet FDX Hot Cube Pressure Washer

Hot Water

200 Bar Yanmar powered hot water Pressure Washer, mounted in steel cage trolley.

This is an industrial hot water pressure washer, capable of meeting the most demanding of cleaning tasks on hand such as graffiti and chewing gum removal.

The well-proven Yanmar Diesel engine coupled via a gearbox to an Italian made Comet triple plunger pump, along with industrial grade dual lance, hose and other hardware means that this machine is your reliable number one for commercial work, day in and day out. The compact yet robust cage mounted on wheels enables this machine to be easily transported around site.

This machine can be used as a cold water pressure washer too, allowing many accessories to be attached.

200Bar Maximum Rated Pressure (2,800 psi)

16Lpm Maximum Rated Flow (4.2 gpm)

140°C Maximum Rated Temperature (284°F)

Weight  
KG  
210kg

PART NO	ITEM
HP-CS90580513	Comet FDX Hot Cube Pressure Washer 16 lpm, 200 Bar, static, Yanmar Diesel
HP-CS90580501	Comet FDX Hot Cube Pressure Washer 16 lpm 200 Bar, wheeled, Yanmar Diesel



Denver Trailer FDX HotCube Diesel Powered Pressure Washer

Hot Water

Hot water pressure washers are ideal for cleaning heavily soiled surfaces. They often help you get the job done quicker and more efficiently than a cold water pressure washer.

The FDX Hot Cube is available to be installed in a vehicle, on a bowser trailer system, skid system or simply a separate wheeled trolley system.



PART NO	ITEM
HP-TR0800B-H15207DHE-300D	Denver Trailer with blue 800-ltr tank and FDX HotCube Diesel Powered Pressure Washer 16 lpm 200 Bar, 60-mtr Hose Reels

Height 1,450mm  
Length 3,600mm  
Width 7,150mm

200Bar Maximum Rated Pressure (2,800 psi)

16Lpm Maximum Rated Flow (4.2 gpm)

140°C Maximum Rated Temperature (284°F)





**120L** Tank Size

**150Bar** Maximum  
(2,100 psi) Rated Pressure

**12Lpm** Maximum  
(2.64 gpm) Rated Flow



## Honda Powered Barrow Mounted High Pressure Washer

150 Bar Honda powered cold water  
Pressure Washer, mounted on a  
sturdy 120-litre barrow

**Cold Water**

### Specifications & Benefits include

- GX160 Honda petrol engine, recoil start with low oil alert
- General Pump geared plunger pump with built-in unloader valve - for smooth reliable operation
- Chemical injector on unloader for chemical pick-up
- 36-inch heavy duty steel chrome lance with quick connector and selection of 5 nozzles or easy nozzle changes
- 10-metre High pressure twin wire rubber hose for industrial use and longevity
- Hose reel mounted on the front - for secure storage of the hose when not in use
- Heavy duty metal trolley with large 15-inch wheels - for robustness and manoeuvrability

This is a versatile and rugged unit, capable of meeting the most demanding outdoor tasks on hand such as cleaning of gutters, cladding, wall surfaces, signs, decking, patios, paths and driveways, to name a few. The well-proven Honda GX160 petrol engine coupled via a gearbox to a reliable American made GP plunger pump, along with industrial grade lance, hose and other hardware means that this machine is your preferred option for commercial work, day in and day out. The compact yet robust barrow enables this machine to be easily transported to and from site and used where water availability is limited.

This machine is the perfect partner for gutter cleaning applications using telescoping wands or for turbo nozzles, rotary brushes and other attachments where single nozzles are used, especially where access to water is limited, thanks to its 120-litre tank.

### PART NO

**HP-B1215OPHR** Honda Powered Barrow Mounted Pressure Washer 12Lpm 150Bar




**HP-B1215OPHR-H** Honda Powered Barrow Mounted Pressure Washer 12Lpm 150Bar with 15m Hose Reel



## DENVER™ 800 Litre Trailer with 15Lpm 207bar Honda Pressure Washer

Cold Water

Highway tow 600 litre and 800 litre water bowlers, mounted on single axle chassis, with petrol/diesel engine and pump combinations, capable of producing up to 15 lpm max flow 207bar max pressure. Complete with a 30m high pressure hose reel and hose.

Height	Length	Width
		
1,270mm	2,450mm	1,750mm

### Features

- Durable and corrosion resistant polyethylene tank, baffled for safe transport of water
- Heavy duty hot-dipped galvanised steel chassis, fully approved for towing on highways
- Adjustable jockey wheel and ball coupling (eye coupling option on request)
- Mudguards, 13-pin plug and highway lighting to EU specifications
- Two rear lights housed in a steel channel for protection
- Fitted with rubber suspension, auto-reverse braking and hand parking brake

**207Bar** Maximum Rated Pressure  
(2,900 psi)

**15Lpm** Maximum Rated Flow  
(3.95 gpm)

**60°C** Maximum Rated Temperature  
(140°F)

PART NO	ITEM
HP-TR0800B-15207PHR-150P	DENVER™ 800 Litre Trailer with 15Lpm 207bar Honda Pressure Washer, 30m Reel
HP-TR0800B-16276PHR-150P	DENVER™ 800 Litre Trailer with 16Lpm 276bar Honda Pressure Washer, 30m Reel






## DENVER™ 800 Litre Trailer and FDX Hot Cube Honda Powered Pressure Washer

Hot Water

These are probably the most compact trailer mounted 600 & 800 litre pressure washers on the market today, with a total length of less than 2.5 meters. A rugged and well-constructed trailer, meeting all current regulations and Type Approval, with powerful engine and pump combinations. This trailer provides a solution to situations where water is readily needed away from a water source and for the most demanding of outdoor cleaning tasks.

- Pedestal mounted heavy duty lockable metal hose reel with 30 metres of twin-wire high pressure hose, 36" dual lance and fan nozzle
- Assortment of 5 different nozzles, 15°, 25°, 40°, pencil and foaming tips

Height	Length	Width
		
1,450mm	3,600mm	1,750mm

### Features

- Italian plunger pumps driven via a gearbox, with up to 200 bar max pressure and 16 lpm max flow capabilities, suitable for powering accessories such as rotary hard surface cleaners and water brooms, etc.
- Reliable Yanmar diesel engine, for easy start and smooth, powerful performance, mounted on to the galvanised chassis.
- Unloader valve with internal bypass, ensures longevity of the pump seals
- Inline suction filter, to prevent any debris from entering the pump.
- Chemical injector valve with line and filter for applying detergents.

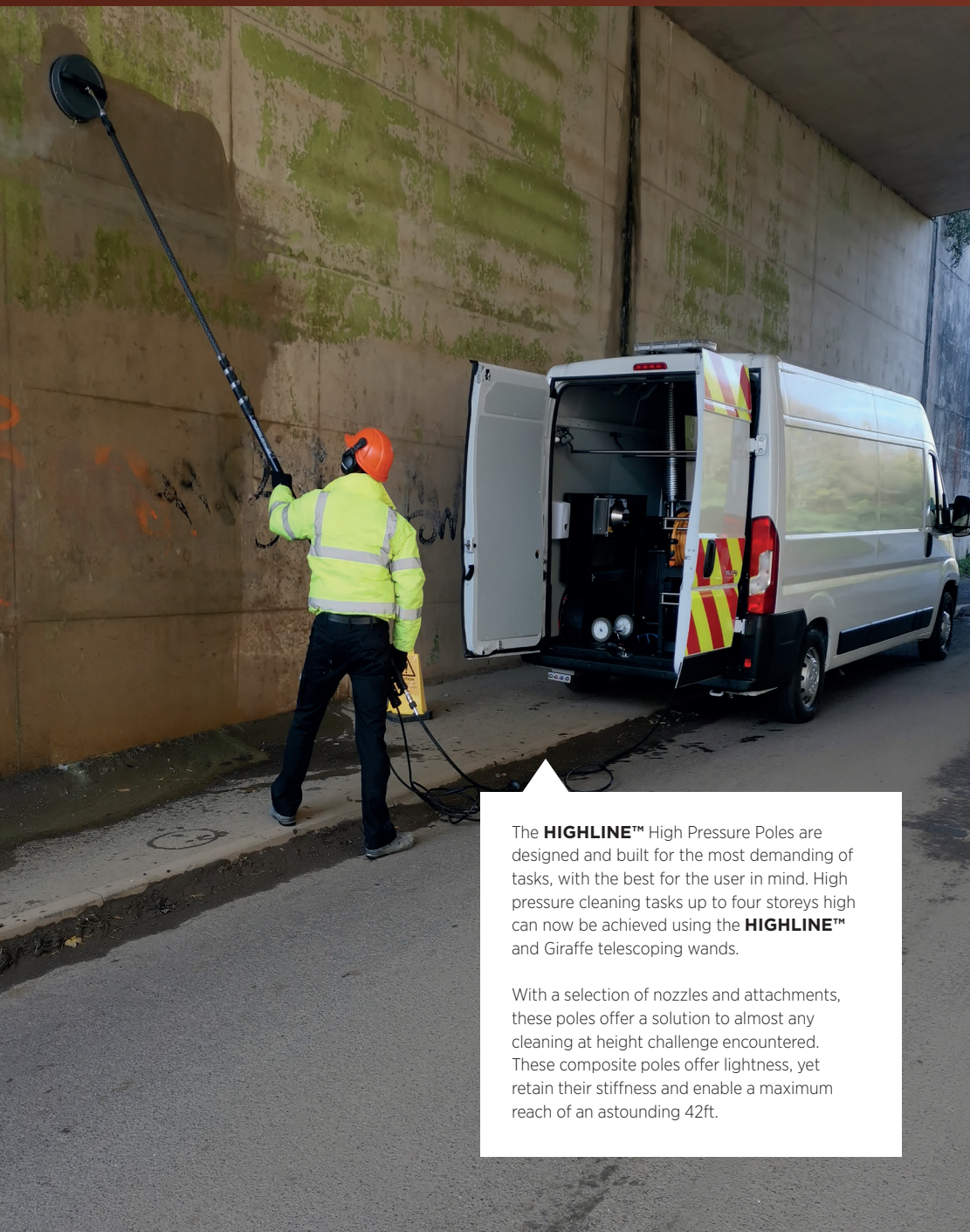
**200Bar** Maximum Rated Pressure  
(2,900 psi)

**16Lpm** Maximum Rated Flow  
(3.95 gpm)

**140°C** Maximum Rated Temperature  
(284°F)

PART NO	ITEM
HP-TR0800B-H15207PHE-300D	DENVER™ Trailer with blue 800 litre tank and FDX Hot Cube Honda Powered Pressure Washer 16 lpm, 200 bar, 60 metre Hose Reels



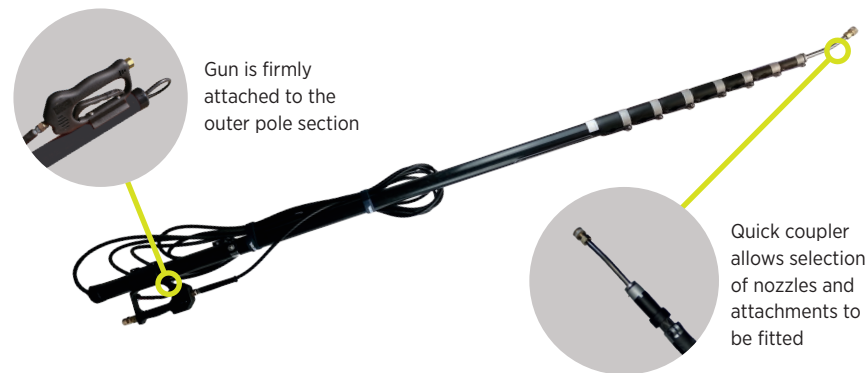


The **HIGHLINE™** High Pressure Poles are designed and built for the most demanding of tasks, with the best for the user in mind. High pressure cleaning tasks up to four storeys high can now be achieved using the **HIGHLINE™** and Giraffe telescoping wands.

With a selection of nozzles and attachments, these poles offer a solution to almost any cleaning at height challenge encountered. These composite poles offer lightness, yet retain their stiffness and enable a maximum reach of an astounding 42ft.

## Giraffe High Pressure Telescopic Poles

Designed to fit most pressure washers, hose rated to (4000 PSI) 280 bar.



Part No.	Composition	No. Of Sections	Minimum Length	Maximum Length	Achievable Height	Weight (kg) (pole only)
<b>HP-HX4-COMP</b>	Hybrid	4	2100mm	6800mm/ 22ft	24ft	2.6kg
<b>HP-HX5-COMP</b>	Hybrid	5	2100mm	8000mm/ 26ft	28ft	3.1kg
<b>HP-HX6-COMP</b>	Hybrid	6	2100mm	9400mm/ 30ft	32ft	3.7kg
<b>HP-HX7-COMP</b>	Hybrid	7	2400mm	12500mm/ 40ft	42ft	4.9kg

**Maximise your cleaning...**  
with the Giraffe high pressure telescoping wands!



**Glass Fibre / Aluminium Combination 18/24 ft Telescopic Wand**

- Rated to 285 Bar

Part No.	Composition	No. Of Sections	Minimum Length	Maximum Length	Achievable Height	Weight (kg) (pole only)
<b>HP-18</b>	Glass Fibre/Aluminium	3	2100mm	5200mm	20ft	3.3kg
<b>HP-24</b>	Glass Fibre/Aluminium	4	2100mm	6900mm	26ft	4.7kg



### STREAMLINE® High Pressure Brush

STREAMLINE® high pressure brush, medium dual bristle, complete with 2 nozzles.

#### PART NO

**HP-SBF26-MD** 10" Brush (260mm)

**HP-SBF36-MD** 14" Brush (360mm)

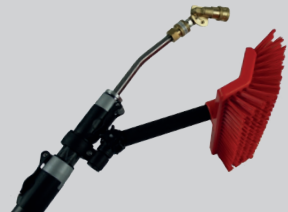


### Belt Kit to suit HP.24 + HP.18

Supplied with HP.18A and HP.24A poles only

#### PART NO

**HP-BK**



### Cladding & Sign Brush Kit

For cladding and sign cleaning a 12" brush can be fitted

#### PART NO

**HP-BRUSH-KIT061201**

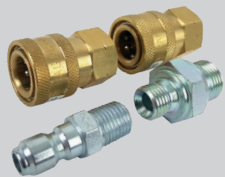


### High Pressure Single Swivel

High Pressure Single Swivel - Female threads

#### PART NO

**HP-SS**



### Quick Release Coupling Kit

Allows quick disconnect of lances and wands.

#### PART NO

**HP-COUP-KIT01**

**HP-COUP-KIT02** Quick Release M22 to F3/8



### High Pressure Brass Swivel

High Pressure Brass Swivel  
male plug, female coupler

#### PART NO

**HP-BS**



### 12" Gutter Cleaning Attachment

For use with all telescoping wands  
(excludes nozzle shown).

#### PART NO

**HP-GC**



### Various Nozzles

For use with all telescoping wands.

#### PART NO

**HP-NP020**

**HP-NP025**

**HP-NP030**

**HP-NP035**

**HP-NP040**

**HP-NP045**

**HP-NP050**

**HP-NP055**

**HP-NP070**

**HP-NP075**

**HP-NP085**

#### AVAILABLE IN

• 5 packs

• Singles

### Professional Chewing Gum Removal Tool

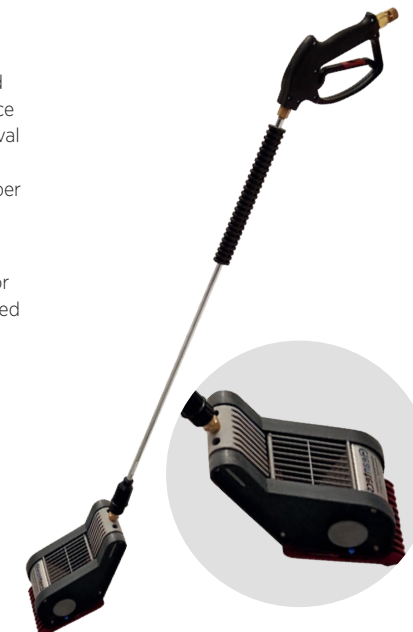
With up to 18 needle nozzles equipped cleaning head with 350 bar maximum operating pressure. The device is hand-held. The built-in nozzle is used for the removal of chewing gum and other stubborn dirt. It dissolves chewing gum from the top, and collects it in a chamber so that it can easily be removed and disposed of after cleaning.

This tool can be used on smooth surfaces with cold or hot water up to 95° C. Rough surfaces are best cleaned with hot water at 85-95° C.

- Operating pressure max. 350 bar
- Spray angle Spot beam
- Temperature max. 95° C
- Casing Plastic / stainless steel
- Nozzle size (table) 030 - 080
- Water consumption max. 34 l / min
- Dimensions 310 x 130 x 180mm
- Weight 2.0kg

#### PART NO

**HP-CTPOLY2-GL0900**





# Surface Cleaners

Flat surface cleaners allow you to clean large areas in a fraction of the time. The cleaner glides easily across the surface uniformly cleaning pool decks, sidewalks, garage floors and more. The cover is made from heavy-duty ABS material and metal components are made from anodised aluminium and stainless steel.



## 460mm (18") Hammerhead Hard Surface Cleaner

**285Bar** Maximum Rated Pressure

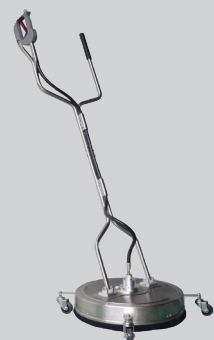
**30Lpm** Maximum Rated Flow

**3/8" F** NPT Inlet

### Part No.

**HP-HSC460-ES**

**HP-HSC460** As above with 4 Stainless Steel Castor Wheels



## 550mm (22") Hammerhead Stainless Hard Surface Cleaner

**285Bar** Maximum Rated Pressure

**30Lpm** Maximum Rated Flow

**3/8" F** NPT Inlet

### Part No.

**HP-HSC550-SS**



**HP-HSC300-QR**

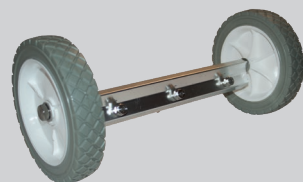
## 300mm Handheld Hard Surface Cleaner

- Ideal for vertical surfaces & confined areas
- Cleans up to 25 m<sup>2</sup> per minute
- M22M inlet

### PART NO

**HP-HSC300**

**HP-HSC300-QR** 12" Handheld Surface Cleaner with 1/4 inch M Quick Release Coupler



## 12" 3-Nozzle Wall Crawler

- Maximum rated pressure – 285Bar (4000psi)
- Maximum rated temperature – 85°C (185°F)
- Water brooms allow you to clean large areas in a fraction of the time compared to standard lances. Glides easily across outdoor surfaces, uniformly cleaning them.

### PART NO

**HP-GP2100505**



**HIGHLINE™** products are underpinned by the General Pump brand, a proven and reliable brand which has been industry tested worldwide for over 34 years.

With a wide variety of accessories available from the huge range of General Pump products, capable of meeting demands of high flows and extreme pressures, the items listed on these pages are just a taster of much more available. Please enquire from our sales team if you require a product not featured here.



## Heavy Duty High Pressure Inline Gun

- Rated to 40 lpm 285 Bar
- 3/8" F NPT inlet • 1/4" F NPT outlet

### PART NO

**HP-G4000-10**



## Heavy Duty High Pressure Gun

- Rated to 30 lpm 285 Bar
- 3/8" F NPT inlet
- 1/4" F NPT outlet

### PART NO

**HP-G4000-08**



## Rotating Turbo Nozzle

- Rated to 260 Bar • 1/4" F BSP inlet

### PART NO

**HP-TN-250** Turbo Nozzle - 250 Bar

**HP-TN-350** Turbo Nozzle - 350 Bar



## 1/4 Plug - 1/4 Thread

### PART NO

**HP-M14M14**



## Gun and 36" Lance Assembly

- For professional use
- Rated to 30 lpm 285 Bar
- Includes M22 male inlet

### PART NO

**HP-GL09002**

\*Nozzle not included



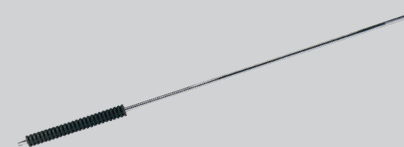
## 1060mm Dual Lance

- 40 lpm 285 Bar
- 1/4" M NPT inlet
- Length 1060mm

### PART NO

**HP-DL1060**

## Chrome Plated Insulated Lances



## Chrome Plated Insulated Lance

- 40 lpm 285 Bar
- 1/4" M NPT inlet
- Length 900mm

### PART NO

**HP-SL0900** 900mm

**HP-SL1060** 1060mm



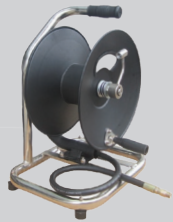
**Scan Here**  
to shop online  
for the latest prices

Contact us on  
**+44 (0)1626 830 830**



## Hose Reels & Accessories

A range of high quality hose reels with direct hand crank rewind, locking mechanism, solid steel construction and full flow brass swivel joint.



### Free Standing 100ft x 3/8" (30m) Hose Reel

- Rated to 350 bar
- 100 ft x 3/8" hose (30m)
- Free standing
- 1/4" NPT Male Inlet

PART NO

HP-HRM100-FS

### Reels rated to 250 bar



### 50 ft x 3/8" (15m) Hose Reel

Inlet Thread: 3/8" NPT Female

PART NO

HP-HRM050



### 100 ft x 3/8" (30m) Hose Reel

Inlet Thread: 3/8" NPT Male

PART NO

HP-HRM100



### 150 ft x 3/8" (45m) Hose Reel

Inlet Thread: 3/8" NPT Female

PART NO

HP-HRM150



### 200 ft x 3/8" (60m) Hose Reel

Inlet Thread: 3/8" NPT Male

PART NO

HP-HRM200



### 150ft x 3/8" (45m) Hose Reel fixed on 'A' Frame

Inlet Thread: 3/8" NPT Female

PART NO

HP-HRM150A



### 150ft x 3/8" (45m) - Hose Reel fixed on 'A' Frame

PART NO

HP-HRM151A-045-6161

Includes 45m 5/16" of twin wire hose



### 150ft x 3/8" (50m) - Hose Reel with Hose Guide fixed on 'A' Frame

PART NO

HP-HRM152A

HP-HRM152A-050-5761

Includes 50m of hose



### 150ft x 3/8" (50m) Electric Hose Reel fixed on 'A' Frame

PART NO

HP-HRM153A

HP-HRM153A-050-5761

Includes 50m of hose



### 150ft x 3/8" (50m) Electric Hose Reel with Hose Guide fixed on 'A' Frame

**PART NO**
**HP-HRM154A**
**HP-HRM154A-050-5761**

Includes 50m of hose



### 300ft x 3/8" (100m) Hose Reel with Hose Guide fixed on 'A' Frame

**PART NO**
**HP-HRM302A**
**HP-HRM302A-100-5761**

Includes 100m of hose



### 150ft x 3/8" (50m) Hose Reel fixed on 'A' Frame & Trolley

Includes 50m of hose

**PART NO**
**HP-HRM158A**
**HP-HRM158A-050-5761**

Includes 50m of hose



### 300ft x 3/8" Electric Hose Reel fixed on 'A' Frame

**PART NO**
**HP-HRM303A**
**HP-HRM303A-100-5761**

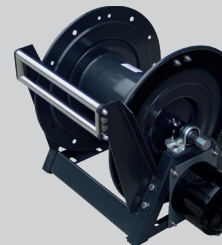
Includes 100m of hose



### 150ft x 3/8" (50m) - Hose Reel with Hose Guide fixed on 'A' Frame & Trolley

**PART NO**
**HP-HRM159A**
**HP-HRM159A-050-5761**

Includes 50m of hose



### 300ft x 3/8" Electric Hose Reel with Hose Guide fixed on 'A' Frame

**PART NO**
**HP-HRM304A**
**HP-HRM304A-100-5761**

Includes 100m of hose



### 300ft x 3/8" (100m) Hose Reel fixed on 'A' Frame

Inlet Thread: 3/8" NPT Male

**PART NO**
**HP-HRM300A**


### 300ft x 3/8" Hose Reel fixed on 'A' Frame & Trolley

**PART NO**
**HP-HRM308A**
**HP-HRM308A-100-5761**

Includes 100m of hose





### 300ft x 3/8" (100m) Hose Reel with Hose Guide fixed on 'A' Frame & Trolley

#### PART NO

HP-HRM309A

HP-HRM309A-100-5761

Includes 100m of hose

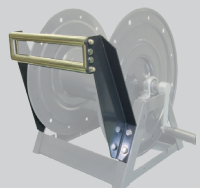


### Hose Reel High Pressure 450' x 3/8 inch - A-frame type

#### PART NO

HP-HRM450A

HP-HRM458A



### Hose Reel Guide Accessory

#### PART NO

HP-GP2100462 To Suit HP-HRM150A

HP-GP2100463 To Suit HP-HRM300A



### High Pressure Hose - 5/16" Twin Wire

#### PART NO

HP-H516T-01000-5757 10mtr Length

HP-H516T-02000-5757 20mtr Length



### Quick Release Plate Kit

Suitable for all HP Hose Reels, with all fixings required.

#### PART NO

HP-KIT0001



### Soap Shooter Kit

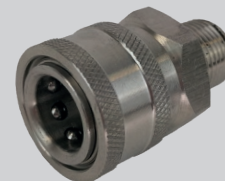
Includes 30ft hose filter and No.4 nozzle.

#### PART NO

HP-GP100145

## High Pressure Couplings

\* All 1/4" couplings rated to 350 bar. All 3/8" and M22 couplings rated to 285 bar.



### 1/4" Quick Disconnect - 1/4" M Thread - Stainless Steel

#### PART NO

HP-F14M14-SS

HP-F38M38-SS



### 1/4" Plug - 1/4" F Thread

#### PART NO

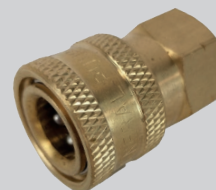
HP-M14F14

### 1/4" Plug - 1/4" F Thread - Stainless Steel

HP-M14F14-SS

### 3/8" Plug - 3/8" F Thread

HP-M38F38



### 1/4" Quick Disconnect - 1/4" F Thread

#### PART NO

HP-F14F14

### 3/8" Quick Disconnect - 3/8" F Thread

HP-F38F38



### 1/4" Plug - 1/4" M Thread

#### PART NO

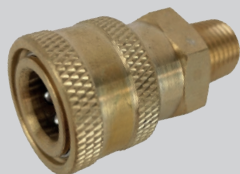
HP-M14M14

### 1/4" Plug - 1/4" M Thread - Stainless Steel

HP-M14M14-SS

### 3/8" Plug - 3/8" M Thread

HP-M38M38

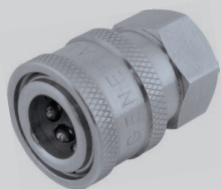


**1/4" Quick Disconnect  
- 1/4" M Thread**

**PART NO**  
HP-F14M14

**3/8" Quick Disconnect - 3/8" M Thread**

**HP-F38M38**



**1/4" Quick Disconnect - 1/4" F Thread - Stainless Steel**

**PART NO**  
HP-F14F14-SS  
HP-F38F38-SS

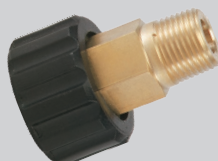


**Threaded Connector  
M22F Thread - 1/4" F**

**PART NO**  
HP-F22F14

**Threaded Connector  
M22F Thread - 3/8" F**

**HP-F22F38**



**Threaded Connector  
- M22F Thread - 1/4" M**

**PART NO**  
HP-F22M14

**Threaded Connector  
- M22F Thread- 3/8" M**

**HP-F22M38**



**Threaded Connector  
- M22M Thread - 1/4" F**

**PART NO**  
HP-M22F14

**Threaded Connector  
- M22M Thread - 3/8" F**

**HP-M22F38**



**Threaded Connector  
- M22M Thread - 1/4" M**

**PART NO**  
HP-M22M14

**Threaded Connector  
- M22M Thread - 3/8" M**

**HP-M22M38**



**Threaded Connector  
M22 to 3/8" M**

**PART NO**  
HP-M22M38Q

Find us on



**Don't forget,**  
for the latest prices shop online at  
**www.streamline.systems**



Contact us on  
**+44 (0)1626 830 830**



# High Pressure Accessories



**Replacement Handle for  
HP-HRM150P Reel**

PART NO  
HP-GP2660233



**Hose Reel Swivel for  
HP-HRM150A/300A**

PART NO  
HP-GP2103246



**Hose Reel Swivel for  
HP-HRM150P Reel**

PART NO  
HP-GP2103261



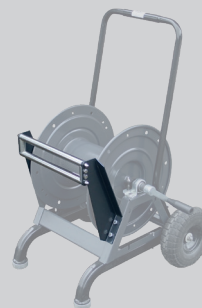
**STREAMLINE**  
**Hose Reel Stacking Kit to suit  
HP-HRM150/300-A**

PART NO  
HP-KIT0003



**Threaded Connector -  
M22M - M22M**

PART NO  
HP-M22M22



**Hose Reel High Pressure  
300' x 3/8 inch - A-frame type  
with Trolley & Hose Guide**

PART NO  
HP-HRM309A



**Hose Reel Trolley for HP A-frame  
Hose Reels**

PART NO  
HP-GP2100465



**Hose Reel Stacking Kit to suit  
HP-HRM150 & HP-HRM300  
Hose Reels**

PART NO  
HP-KIT0002



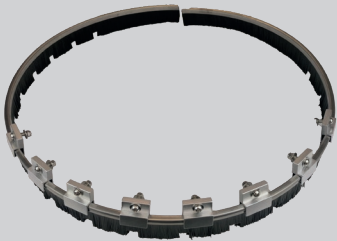
**Replacement Brush for  
HP-HSC300 Rotary**

**PART NO**  
**HP-GP2660195**



**Nozzle Jet for HP-HSC300 Rotary  
Hard Surface Cleaner**

**PART NO**  
**HP-GP925020S**



**Replacement Brush for  
HP-HSC460 Rotary**

**PART NO**  
**HP-GP2660195**



**Nozzle Jet for HP-HSC  
460 / 500 / 550 Rotary HSC**

**PART NO**  
**HP-GP925020M**



**Replacement Brush for  
HP-HSC550 Rotary**

**PART NO**  
**HP-GP2103223**



**Swivel with Zert for Rotary  
HSC 460 / 500**

**PART NO**  
**HP-GP2103220** HP-HSC460 / 500  
**HP-GP2103226** To suit HP-HSC550



**Compensating Gun for  
HP-HSC460/500/550 Rotaries**

**PART NO**  
**HP-G4000-FSC**



**Rotary Arm with Nozzles for  
HP-HSC550 rotary**

**PART NO**  
**HP-GP2103224**



**Drain Cleaning Nozzle**

**PART NO**  
**HP-DNC-04**

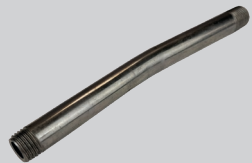




**Lance Extension for HP & Power Poles, M22F x 1/4 Quick Disconnect, 150mm**

Suits the HP-18 and HP-24 high pressure Giraffe poles

**PART NO**  
**HP-EXT-150-01**



**Stainless Extension - 1/4" M x 1/4" M - 150mm**

**PART NO**  
**HP-EXT-COMP** To Suit HP-18 / HP-24



**Replacement O-Ring for HP-F14**

**PART NO**  
**HP-F14-OR-001**



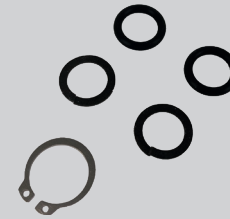
**Replacement O-Ring for HP-F38**

**PART NO**  
**HP-F38-OR-001**



**Replacement Brass Elbow O-Ring**

**PART NO**  
**HP-BHC90-OR-001**



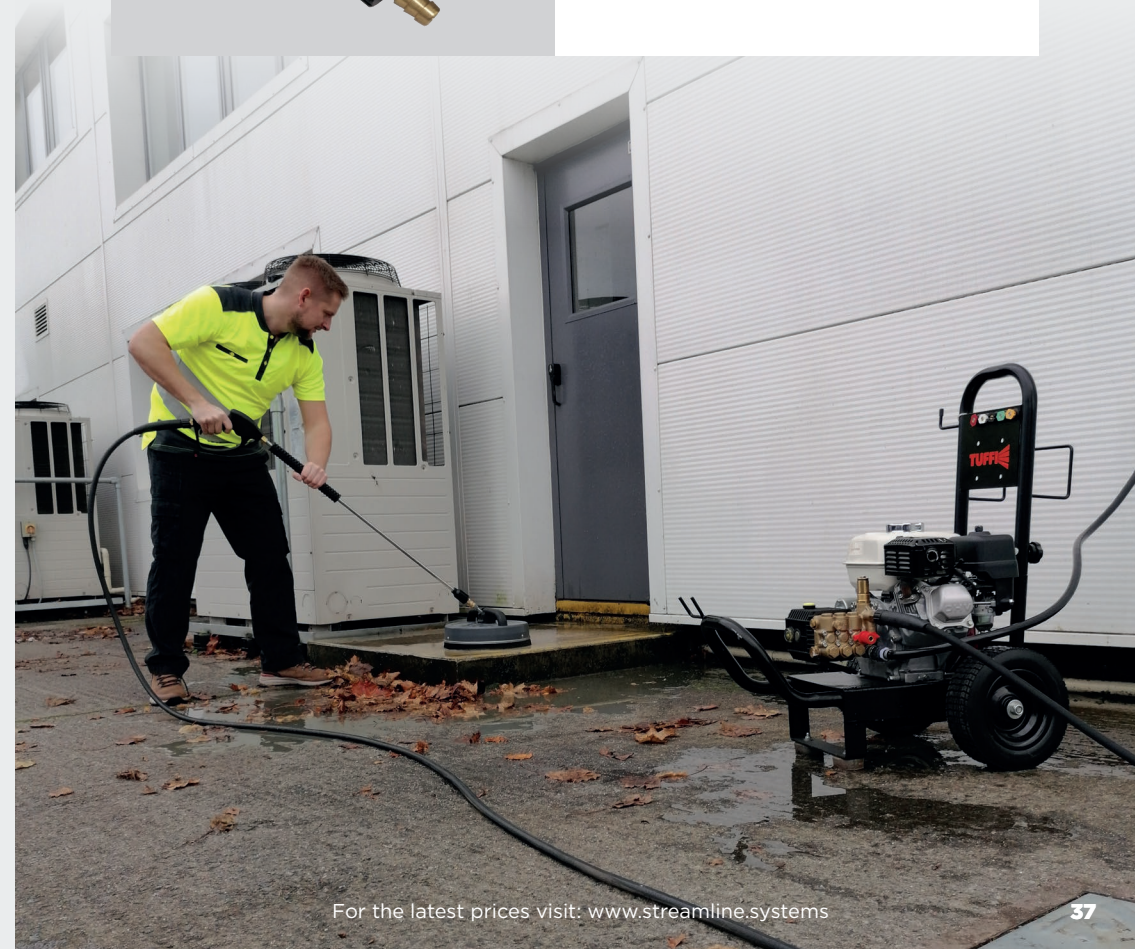
**Repair Kit for Swivels - to suit HP-HRM-D reels**

**PART NO**  
**HP-GP2100278**



**Adjustable Brass Chemical Injector - 3/8"**

**PART NO**  
**HP-GP100619**





If you are looking for an item  
not featured in this product overview  
then give us a call - we may be  
able to source it for you.

---

Hamilton House, 8 Fairfax Road,  
Heathfield Industrial Estate,  
Newton Abbot, Devon TQ12 6UD, UK

T: +44 (0)1626 830 830  
E: [sales@streamline.systems](mailto:sales@streamline.systems)  
W: [www.streamline.systems](http://www.streamline.systems)