



INSTRUCTION MANUAL

**STREAMLINE®**

STREAMLINE®  
Electric Powerdrive  
Hose Reel

**Codes:**

PR1  
PR16002-AS  
PR18002-AS



English

INSTR-PR1

## Installation Instructions

- Place your in Electric Hose Reel a suitable position
- Ensure you leave enough space to manually operate the reel with the handle kit should it be required.
- Check underneath the vehicle below where the hose reel is situated to ensure that you can find multiple fixing points without obstruction
- Ensure that the hose reel is bolted through the peaks of the undulated floor and not through the troughs (See figure 1).
- Remove the hose reel controller to enable access to the mounting points underneath
- We recommend that you have a least four mounting points, 2 at the front and 2 at the back (See Figure 2). The further apart the bolt centers, the better!
- Once you selected an appropriate position for your hose reel, drill the holes that you have selected and fit the bolt down kit as shown in below.
- After the hose reel is secured, place the controller back onto its mounting pegs and screw down securely

Figure 1

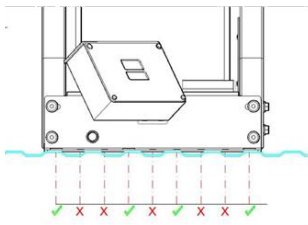


Figure 2

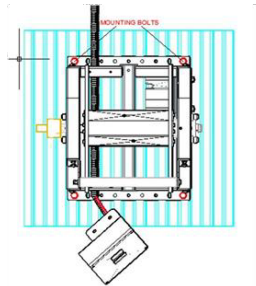
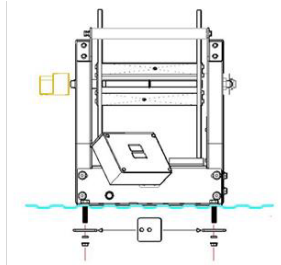


Figure 3



## Electrical connections

Once your hose reel has been fixed in position, run the length of conduit up to your system battery in a place where it will not be crushed by other items in your vehicle. For connections to the battery please refer to the hose reel controller quick start guide sent with this item.

## Operational instructions

Please refer to the hose reel controller quick start sent with this item for the operation of the control unit

Do not expose the hose reel to freezing conditions as internal seals may split causing leaks. If this occurs, repairs/replacements will not be covered under warranty.



- Take a step back from the hose reel to ensure that your hands are clear of the reel
- We recommend that you start with a low speed of 20 – 30 and build your speed up as you become competent using the electric hose reel unit
- We recommend a maximum speed of 60.
- When reeling the hose in, ensure that the environment you are working in is free from any members of the public, animals, and any apparent obstructions

## STREAMLINE® Warranty

The warranty on all Machines and Equipment is for 1 year (12-months) from RECORDED DATE OF PURCHASE.

THIS WARRANTY EXCLUDES NORMAL MAINTENANCE ITEMS, including but not limited to HOSES, FILTERS, O-RINGS, DIAPHRAGMS, VALVES, GASKETS, CARBON BRUSHES and damage to motors and other components as a result of failure to replace normal maintenance items. THIS LIST IS NOT EXHAUSTIVE.

If **STREAMLINE®** receives notice of such defects during the warranty period, **STREAMLINE®** will either, at its opinion, repair or replace components which prove to be defective.

Replacement parts will only be supplied under warranty, upon the inspection and approval of the defective parts by **STREAMLINE®**.

Should it be necessary to supply replacement parts before the opportunity to inspect, these will be charged at current prices and credit will only be issued upon subsequent inspection and warranty approval by **STREAMLINE®**.

The customer is responsible for the cost of return of the defective part. If warranty is approved, **STREAMLINE®** will pay for the cost of the repaired or replacement part.

This warranty excludes the following conditions and circumstances which are at the discretion of **STREAMLINE®**:

Wear and tear, misuse, abuse improper maintenance, frost damage, the use of chemicals other than those supplied or approved by **STREAMLINE®**, improper installation or repair, unauthorised modification, incidental or consequential costs, loss or damage, service, labour or third party charges, the cost of returning defective parts to **STREAMLINE®**.

This warranty constitutes the exclusive remedy of any purchaser of a **STREAMLINE®** unit and is in lieu of all other warranties, express or implied, including without limitation any implied warranty of merchantability or fitness for use, to the fullest extent permitted by law. In no event shall any implied warranty of merchantability or fitness for use exceed the term of the applicable warranty stated above and **STREAMLINE®** shall have no other obligation or liability.

### Important

Unfortunately these rights cannot be transferred to a third party.



## Why STREAMLINE®?

### Flexibility

- **STREAMLINE®** systems can be built according to customers' exact requirements
- For non-standard systems, the user's needs or specifications are listened to and turned into reality.

### Quality

- Whilst price is important, quality is remembered long after price is forgotten
- We insist on sourcing brand name products from around the world, only of a reputable quality, and bring them together under the **STREAMLINE®** name
- All **STREAMLINE®** products carry a full one year's warranty, according to the manufacturers' standard terms and conditions of sale.

### Service

- We have an in-house technical helpline able to answer most of your questions relating to the capabilities and functionalities of all **STREAMLINE®** products
- If we get it wrong, we will put it right. If you are sent a wrong item, we will immediately attend to sending you the correct item and arrange a collection of the wrong item without any quibbles
- **STREAMLINE®** is backed by a comprehensive range with massive stocks providing you with a 'one stop shop' for all your requirements.



MANUFACTURED  
IN THE  
UNITED KINGDOM



CHECKED AND  
TESTED BY  
QUALITY CONTROL



Hamilton House, 8 Fairfax Road,  
Heathfield Industrial Estate,  
Newton Abbot  
Devon, TQ12 6UD  
United Kingdom

**Telephone:** +44 (0) 1626 830 830

**Email:** [sales@streamline.systems](mailto:sales@streamline.systems)

**Visit:** [www.streamline.systems](http://www.streamline.systems)

INSTR-PR1