



## INSTRUCTION MANUAL

**STREAMLINE®**

**Codes:**

SFC5

**Kit Includes:**

STREAMLINE® SFC5  
Digital Controller



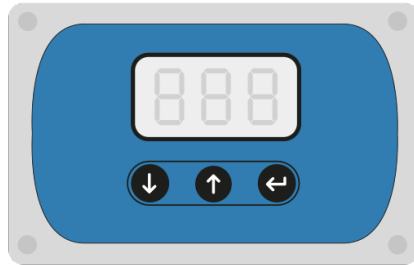
English

INSTR-SFC5

## Operating & Specifications

**Coping easily with demanding daily use, the STREAMLINE® controller:**

- cuts resin use to a minimum by giving the operator fine control overflow rates
- controls the water to pump -fed pole systems accurately and dependably extends the life of resin cartridges
- allows fine pump control 0-99
- displays battery voltage
- has easy to set up dead-end detection
- Child's play to use...



The unit is supplied in a robust ABS case as standard. All the connectors are of a tough, hard wearing design. The unit is sealed to IP63 to prevent water ingress. The electronics are protected from mechanical shock and moisture.

- It has simple to use controls through a three button interface. Unit status is indicated on the three digit display.

### Operation

- To turn on the unit, press Up arrow or Down arrow . The unit will ramp up to the last pump setting. The pump setting is indicated as a value from 0-99.
- To turn up the pump, press in single steps or press and hold to accelerate.
- To see the battery voltage, press Enter button . The voltage is displayed as a 3-digit number e.g. '12.5' (the unit is volts). Press again to go back to the pump setting.
- To turn off the unit, press and hold Enter button .

### Priming Your System

- After filling your water tanks you must prime your system by pumping all the air from the hoses

### Specifications

The controller is capable of driving pumps rated up to 10A from standard 12V vehicle battery.

Electrical Specification	Value	Mechanical Specification	Value
Supply voltage	6-25V	Enclosure material	ABS
Maximum pump drive current	10A	Water resistance	IP65
Typical drive current	2-3A	Dimensions (mm)	115x65x40
Working temperature	0°C-40°C	Voltmeter reading	± 100mV

### Adjusting Dead End Detection

The **STREAMLINE®** controller can shut down the pump automatically when the flow is stopped by something like a kink in the hose or when the pole is removed (should you have cut-off EZ snap connectors). This is called a 'Dead -End'. This feature is useful as it prevents build-up of pressure in a system and so minimises the risk of blown hoses and fittings. It also reduces the wear on the pump. We call this feature 'Dead-End Detection '.

However, the sensitivity must be set by the user. This is to prevent the unit turning off too early (for instance as a system pressures up) or too late (when you may start blowing hoses).

- To adjust dead-end detection, press and hold and at the same time. Wait for 'Cal' to display on the screen. The pump will continue to drive at its current value.
- When 'Cal' displays on the screen, adjust dead-end detection up with (less sensitive, turns off at higher pressures) or down with (more sensi-tive, turns off at lower pressures).
- When you are happy with the setting, press Enter button .

## Controller Messages

Message	Description
	<b>DE</b> - A dead-end has been detected. The pump has been turned off automatically by the controller.
	<b>PS</b> - Pressure switch has activated. You must reduce pressure to allow the pump to re-start.
	<b>Bat (Pump still working)</b> - Your battery voltage has dropped below 11.5V.  Re-charge your battery as soon as possible
	<b>Bat (Flashing and pump stopped)</b> - Your battery voltage has dropped below 11.0V. The pump has been stopped by the controller to prevent possible damage to the battery. Re-charge your battery as soon as possible.

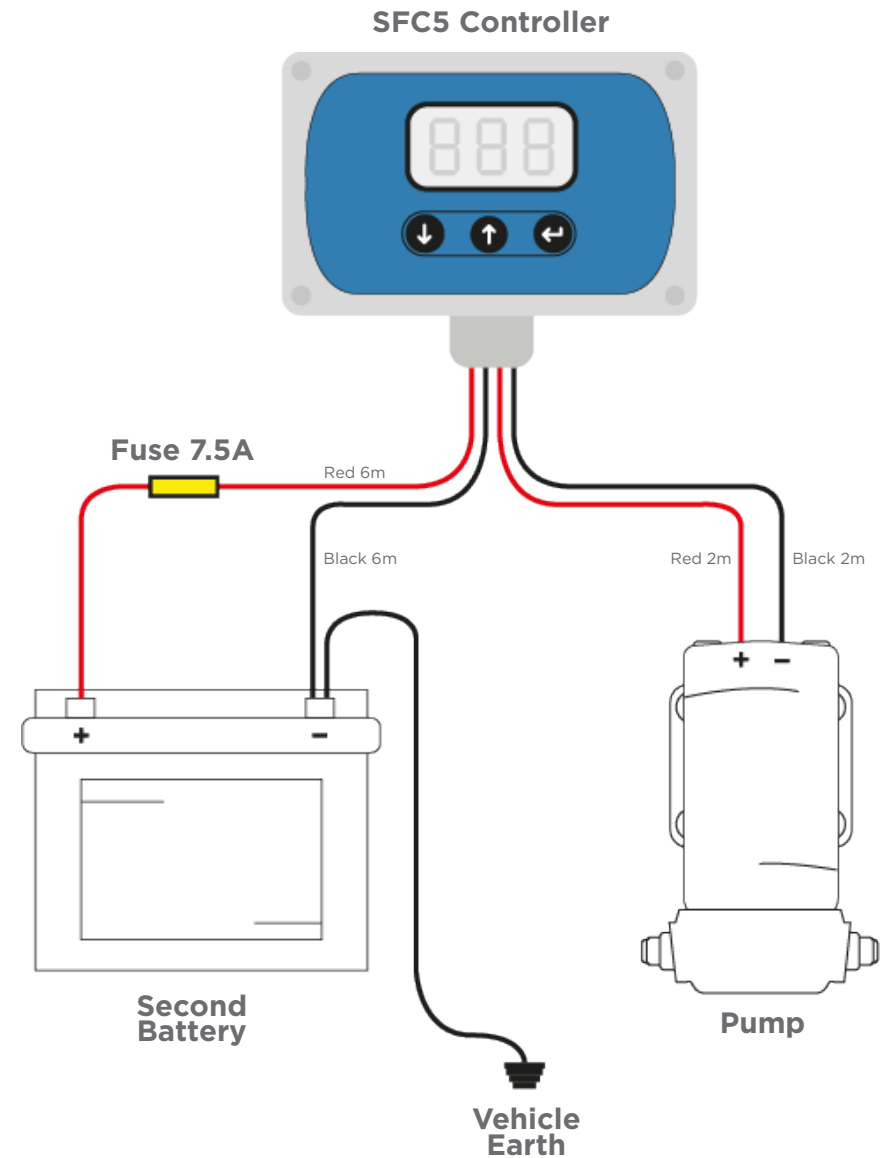
## Operating Warnings

1. Adjust your flow settings carefully. Repeated false dead-end detection indicates that the dead-end detection should be turned up (less sensitive).
2. For absolute safety always wire through the pump pressure switch. (The pressure switch can be bypassed if absolutely necessary - the unit will protect itself under normal conditions.)
3. The controller is a WATER PUMP controller: it will not work with air in the system.

Always prime your system before starting work. If air in the system causes false dead-end detection, turn dead-end detection up (less sensitive).

## Fitting Instructions

1. Follow these instructions carefully. Always use a qualified electrician for electrical installation. The warranty is void if the unit is damaged through in correct connection or use. **STREAMLINE®** recommends all cables are run through insulating conduit.
2. Fit the **STREAMLINE®** controller to a surface securely using M3 bolts through the wells provided. Do not connect the electrical connections to the **STREAMLINE®** controller.
3. Ensure the pump is mounted securely. Connect the fuses as indicated in the connection diagrams. **DO NOT INSTALL FUSES IN THE FUSE-H HOLDERS yet.**
4. Connect the power wires to the pump: Red (3) to +POSITIVE terminal, Black (4) to - NEGATIVE terminal.
5. Connect the power wires to the battery: Red (1) to +POSITIVE terminal, Black (2) to - NEGATIVE terminal.
6. Install the fuses in the fuse-holders now. The unit should now power up when either or are pressed.



## STREAMLINE® Warranty

The warranty on all Machines and Equipment is for 1 year (12-months) from RECORDED DATE OF PURCHASE.

THIS WARRANTY EXCLUDES NORMAL MAINTENANCE ITEMS, including but not limited to HOSES, FILTERS, O-RINGS, DIAPHRAGMS, VALVES, GASKETS, CARBON BRUSHES and damage to motors and other components as a result of failure to replace normal maintenance items. THIS LIST IS NOT EXHAUSTIVE.

If **STREAMLINE®** receives notice of such defects during the warranty period, **STREAMLINE®** will either, at its opinion, repair or replace components which prove to be defective.

Replacement parts will only be supplied under warranty, upon the inspection and approval of the defective parts by **STREAMLINE®**.

Should it be necessary to supply replacement parts before the opportunity to inspect, these will be charged at current prices and credit will only be issued upon subsequent inspection and warranty approval by **STREAMLINE®**.

The customer is responsible for the cost of return of the defective part. If warranty is approved, **STREAMLINE®** will pay for the cost of the repaired or replacement part.

This warranty excludes the following conditions and circumstances which are at the discretion of **STREAMLINE®**:

Wear and tear, misuse, abuse improper maintenance, frost damage, the use of chemicals other than those supplied or approved by **STREAMLINE®**, improper installation or repair, unauthorised modification, incidental or consequential costs, loss or damage, service, labour or third party charges, the cost of returning defective parts to **STREAMLINE®**.

This warranty constitutes the exclusive remedy of any purchaser of a **STREAMLINE®** unit and is in lieu of all other warranties, express or implied, including without limitation any implied warranty of merchantability or fitness for use, to the fullest extent permitted by law. In no event shall any implied warranty of merchantability or fitness for use exceed the term of the applicable warranty stated above and **STREAMLINE®** shall have no other obligation or liability.

### Important

Unfortunately these rights cannot be transferred to a third party.



## Why STREAMLINE®?

### Flexibility

- **STREAMLINE®** systems can be built according to customers' exact requirements
- For non-standard systems, the user's needs or specifications are listened to and turned into reality.

### Quality

- Whilst price is important, quality is remembered long after price is forgotten
- We insist on sourcing brand name products from around the world, only of a reputable quality, and bring them together under the **STREAMLINE®** name
- All **STREAMLINE®** products carry a full one year's warranty, according to the manufacturers' standard terms and conditions of sale.

### Service

- We have an in-house technical helpline able to answer most of your questions relating to the capabilities and functionalities of all **STREAMLINE®** products
- If we get it wrong, we will put it right. If you are sent a wrong item, we will immediately attend to sending you the correct item and arrange a collection of the wrong item without any quibbles
- **STREAMLINE®** is backed by a comprehensive range with massive stocks providing you with a 'one stop shop' for all your requirements.



MANUFACTURED  
IN THE  
UNITED KINGDOM



CHECKED AND  
TESTED BY  
QUALITY CONTROL



Hamilton House, 8 Fairfax Road,  
Heathfield Industrial Estate,  
Newton Abbot  
Devon, TQ12 6UD  
United Kingdom

**Telephone:** +44 (0) 1626 830 830

**Email:** [sales@streamline.systems](mailto:sales@streamline.systems)

**Visit:** [www.streamline.systems](http://www.streamline.systems)

INSTR-SFC5