

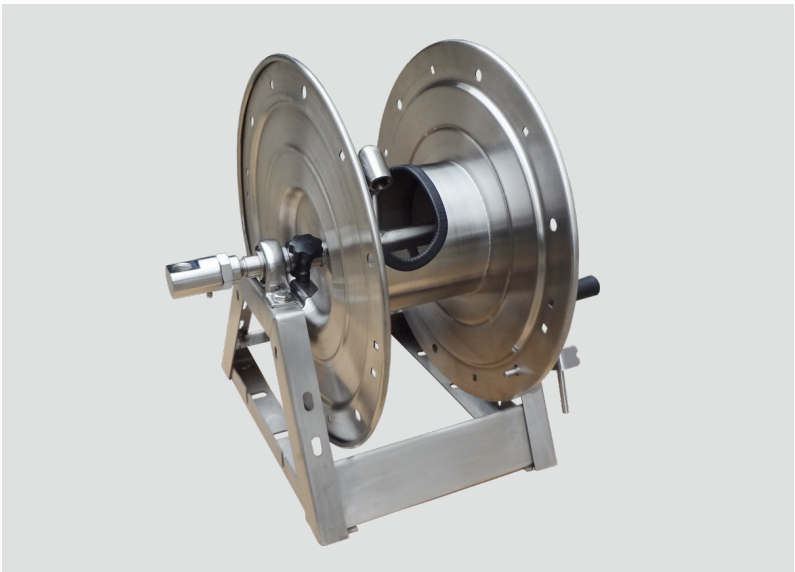
# Hose Reel High Pressure 100' x 3/8 inch - high temp stainless steel

HP-HRM150A-SS



## Features

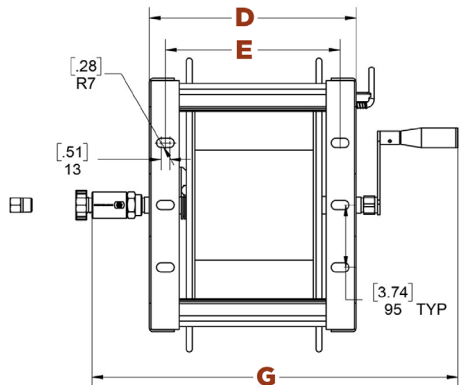
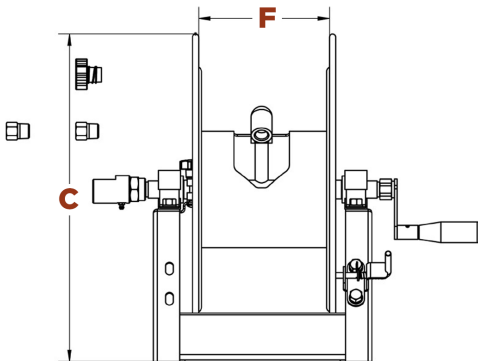
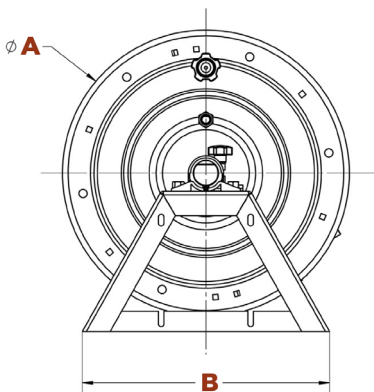
- Variable friction brake
- Direct hand-crank rewind with locking pin and folding mechanism
- Heavy duty stainless steel construction
- Full flow swivel stainless swivel
- Many available accessories



## Assembly / Operating Instructions

1. Connect the handle to either end of the axle which doubles as a fluid path, use a suitable thread sealant and tighten accordingly.
2. Connect the swivel on the opposite end of the axle as the handle, use a suitable thread sealant and tighten accordingly.  
**\*See parts list image for orientation of swivel\***
3. Attach outlet hose to the outlet fitting located in the hub, use a suitable thread sealant and tighten accordingly.
4. Attach supply hose to the hose reel swivel, use a suitable thread sealant and tighten accordingly.
5. Use 1/2" or 13 mm bolts when securing the hose reel to ceiling or wall.
6. The hose reel is ready for operation.

Part No.	DHRA50150SS	DHRA50300SS	DHRA50450SS
3/8" Hose Capacity	150 ft.	300 ft.	450 ft.
5/8" Garden Hose Cap.	125 ft.	225 ft.	325 ft.
3/4" Garden Hose Cap.	100 ft.	175 ft.	250 ft.
Swivel Pressure Rating	5,000 PSI		
Inlet	1/2" NPT-F		
Outlet	1/2" NPT-F		
Max. Temp	250° F		



	Dimensions mm						
	A	B	C	D	E	F	G
DHRA50150SS	450mm	387mm	473.6mm	315mm	264mm	196mm	558mm
DHRA50300SS	450mm	387mm	473.6mm	445mm	394mm	326mm	688mm
DHRA50450SS	450mm	387mm	473.6mm	585mm	539mm	466mm	829mm

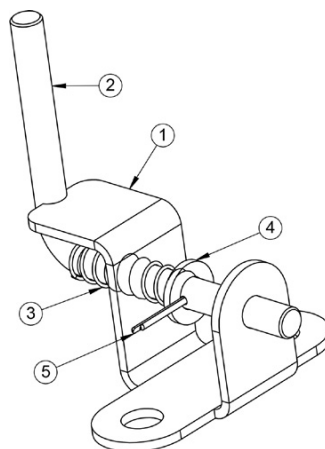
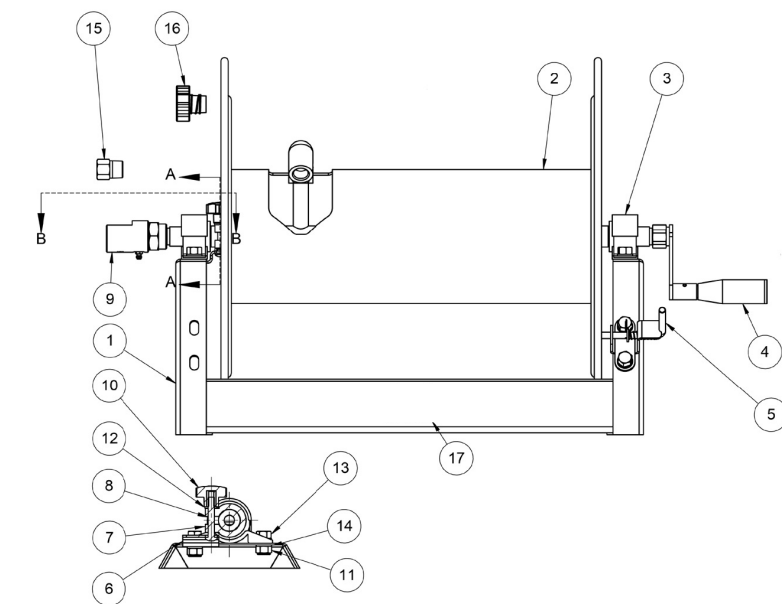
# Hose Reel High Pressure 100' x 3/8 inch - high temp stainless steel

HP-HRM150A-SS



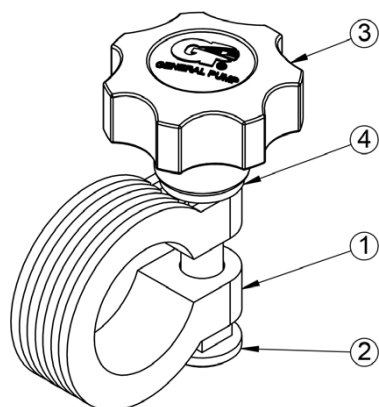
## Parts List

Item	Part No.	Description	QTY
1	2103142	ASSY, HUB & FLANGE, 150'	1
	2103148	ASSY, HUB & FLANGE, 300'	
	2103160	ASSY, HUB & FLANGE, 450'	
2	2103140	FRAME, HOSE REEL, 150'	1
	2103146	FRAME, HOSE REEL, 300'	
	2103161	FRAME, HOSE REEL, 450'	
3	2640043	PILLOW BLOCK	2
4	2103143	FOLDED HANDLE, 1/2NPT-F, SS	1
5	2103346	ASSY, LOCK PIN SS	1
6	2540182	BRACKET, LOCK, SS	1
7	2660268	BRAKE	1
8	2200103	BOLT, M8	1
9	DSW9012SS	Swivel, 1/2"NPT-F BALL BEARING	1
10	2660405	KNOB, BRAKE	1
11	2203017	Nut, M10, NYLOK, SST	6
12	2200013	WASHER, M8, SS	1
13	2200104	BOLT, M10	6
14	2203413	WASHER, FLAT, M10	12
15	2520227	Adapter, 1/2"NPT-Mx-3/8"NPT-F, SS	2
16	D10032K	FITTING, GH-F X 1/2 NPT-M, FILTER & SPRING	1
17	2400004	DECAL, GP	1



Lock Pin Repair Kit 2103346

Item No.	Part No.	Description	
1	2540141	BRACKET, LOCK	1
2	2540142	PIN, LOCK	1
3	2720025	SPRING, LOCK PIN	1
4	2200013	WASHER, M8, SS	1
5	2202033	PIN, COTTER, 2x20	1



Brake Repair Kit 2103139

Item No.	Part No.	Description	
1	2660268	Brake	1
2	2200103	Bolt, M8	1
3	2660405	Knob, Brake	1
4	2200013	Washer, M8, SS	1

### WARNING:

Exposure of skin directly to pressurized air or fluids could result in severe bodily injury!

Only Trained and qualified personnel should install or replace the device

De-pressurize prior to servicing