



INSTRUCTION MANUAL

HIGHLINE™

Codes:

HP-GP2100306



English

INSTR-HP-GP2100306



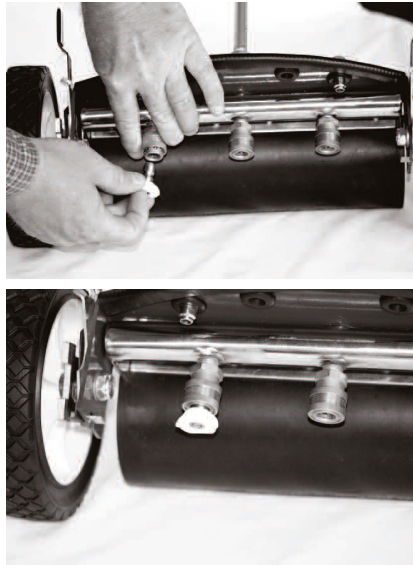
Due to the possibility of small amounts of residue remaining after the manufacturing process, it is important to follow these instructions:

Operating your water broom

Connecting the spray nozzles to the manifold

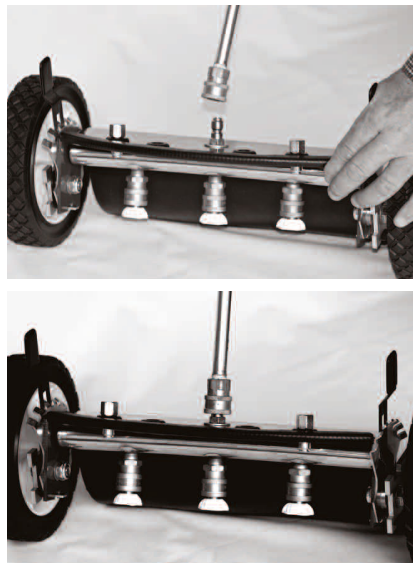
Before installing the nozzles, it is very important to flush the TRIKLEENER® with clean water.

Slide the outer portion of the quick connect fitting (collar) up, insert male portion of spray nozzle and release to "lock in" the nozzle. Make certain that the nozzles are aligned to ensure correct spraying patterns.



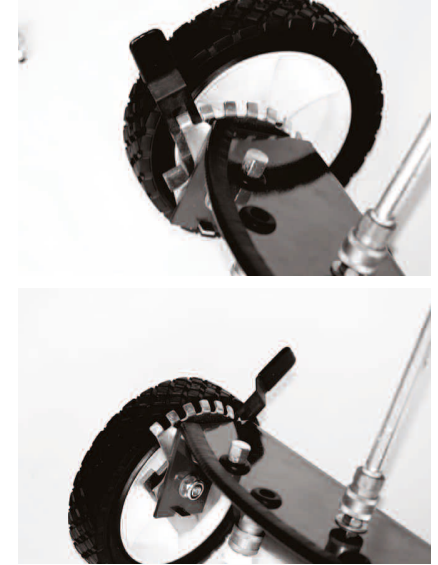
Connecting to pressure washer wand

Utilizing the quick connect fitting on the hand wand of the unit, connect directly onto the top of the TRIKLEENER® male fitting.



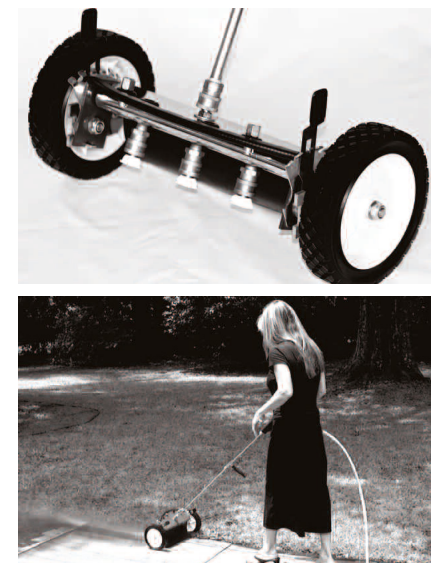
Setting the height adjusters

Pushing the metal tab, release the bar so that settings are possible. The lower the setting, the closer the unit will be to the ground, increasing the velocity of water and increasing the cleaning power. By raising, it decreases the velocity thereby creating a "gentler" stream for painted surfaces.



Utilizing the TRIKLEENER® to its maximum cleaning power

The unit is designed to be best used at approximately a 45 degree angle to push the dirt and grime away from the user. There are two methods found effective. The first is using the unit in a "vacuum cleaning" motion, and the other is to roll the unit in a straight line in a slow and deliberate manner. Each method has been found to be effective.



Especially tough cleaning situations

There are times when the area to be cleaned is especially tough and may require even more water pressure and volume in order to clean in an effective and efficient manner. In these cases, reduce the number of spray nozzles to 2, replacing one with a plug. Make certain that the nozzles are located next to each other and aligned correctly.



Miscellaneous uses

Cleaning street curbs, decks, docks, painted porches or even 90 degree curbs can be cleaned utilizing the TRIKLEENER. Simply adjust settings as desired.



Maintenance

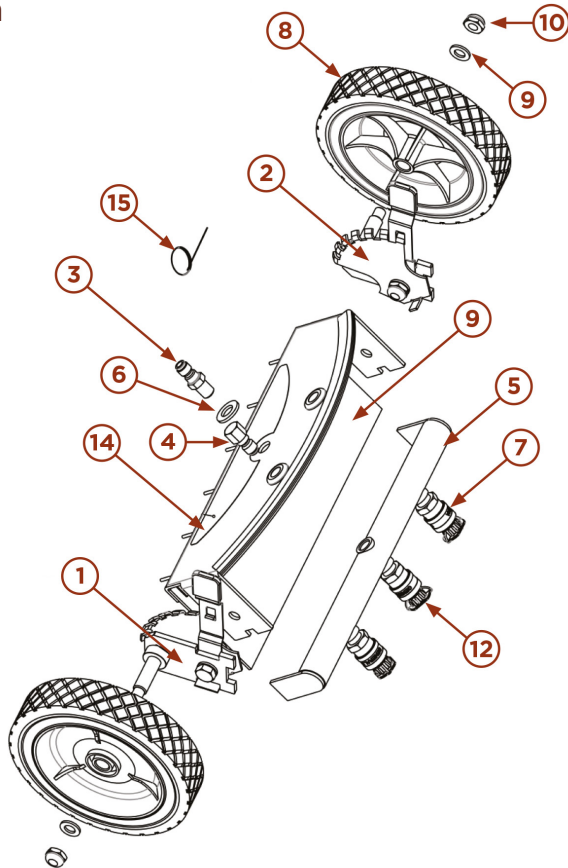
After EACH USE, nozzles need to be removed and the quick-connect fittings and nozzles must be flushed with a hose to continue functioning properly.

Remove nozzles after each use to prevent them from sticking in the quick disconnects.

Other safety precautions

1. ALWAYS have unit turned off when adjusting, inserting or removing nozzles or plugs.
2. NEVER attempt to adjust nozzle spray patterns when unit is engaged.
3. After completing the cleaning job, and pressure washer unit is turned off, pull trigger in your hand wand in order to release pressure BEFORE disconnecting the **TRIKLEENER®**.

Breakdown



Breakdown:

No.	Description	Qty.			
1	PAWL ASSY., RIGHT	1	8	WHEEL, 7"	1
2	PAWL ASSY., LEFT	1	9	WASHER, FLAT, M10	1
3	PLUG, 1/4X12X1.25	1	10	NUT, M10	1
4	PLUG, 1/4	1	11	LABEL, WARNING	1
5	MANIFOLD	1	12	NOZZLE, 65 X 1.35	1
6	FLAT WASHER, M12	1	13	FRAME ASSY.	2
7	COUPLER, 1/4 QC	1	14	LABEL, WATER BROOM	2
			15	UNCLOGGER, NOZZLE	2

TRIKLEENER® Nozzle sizing chart

		Pounds Per Square Inch - PSI										
		1500	1750	2000	2250	2500	2750	3000	3250	3500	3750	4000
Nozzle Equivalent	2	0.92	0.99	1.06	1.13	1.58	1.66	1.73	1.80	1.87	1.94	2.00
	2.5	1.22	1.32	1.41	1.50	1.98	2.07	2.17	2.25	2.34	2.42	2.50
	3	1.53	1.65	1.77	1.88	2.37	2.49	2.60	2.70	2.81	2.90	3.00
	3.5	1.84	1.98	2.12	2.25	2.77	2.90	3.03	3.15	3.27	3.39	3.50
	4	2.14	2.32	2.47	2.63	3.16	3.32	3.46	3.61	3.74	3.87	4.00
	4.5	2.45	2.65	2.83	3.00	3.56	3.73	3.90	4.06	4.21	4.36	4.50
	5	2.76	2.98	3.18	3.38	3.95	4.15	4.33	4.51	4.68	4.84	5.00
	5.5	3.06	3.31	3.54	3.75	4.35	4.56	4.76	4.96	5.14	5.33	5.50
	6	3.37	3.64	3.89	4.13	4.74	4.97	5.20	5.41	5.61	5.81	6.00
	6.5	3.67	3.97	4.24	4.50	5.14	5.39	5.63	5.86	6.08	6.29	6.50
	7	3.98	4.30	4.60	4.88	5.53	5.80	6.06	6.31	6.55	6.78	7.00
	7.5	4.29	4.63	4.95	5.25	5.93	6.22	6.50	6.76	7.02	7.26	7.50

- Step 1: Find your pressure washer PSI rating on the table above.
 Step 2: Find your GPM in the column of your PSI.
 Step 3: Find color and this will show what nozzles you should use.

- Will work with nozzles included and/or with one nozzle plugged
- Will work with nozzles included (3 x 1.35)
- Should purchase three 1/4" quick connect nozzles size #2.0 with a 40 degree angle
- Should purchase three 1/4" quick connect nozzles size #2.5 with a 40 degree angle

Nozzles can be purchased at most Pressure Wash dealers or aftermarket dealers

STREAMLINE® Warranty

The warranty on all Machines and Equipment is for 1 year (12-months) from RECORDED DATE OF PURCHASE.

THIS WARRANTY EXCLUDES NORMAL MAINTENANCE ITEMS, including but not limited to HOSES, FILTERS, O-RINGS, DIAPHRAGMS, VALVES, GASKETS, CARBON BRUSHES and damage to motors and other components as a result of failure to replace normal maintenance items. THIS LIST IS NOT EXHAUSTIVE.

If **STREAMLINE®** receives notice of such defects during the warranty period, **STREAMLINE®** will either, at its opinion, repair or replace components which prove to be defective.

Replacement parts will only be supplied under warranty, upon the inspection and approval of the defective parts by **STREAMLINE®**.

Should it be necessary to supply replacement parts before the opportunity to inspect, these will be charged at current prices and credit will only be issued upon subsequent inspection and warranty approval by **STREAMLINE®**.

The customer is responsible for the cost of return of the defective part. If warranty is approved, **STREAMLINE®** will pay for the cost of the repaired or replacement part.

This warranty excludes the following conditions and circumstances which are at the discretion of **STREAMLINE®**:

Wear and tear, misuse, abuse improper maintenance, frost damage, the use of chemicals other than those supplied or approved by **STREAMLINE®**, improper installation or repair, unauthorised modification, incidental or consequential costs, loss or damage, service, labour or third party charges, the cost of returning defective parts to **STREAMLINE®**.

This warranty constitutes the exclusive remedy of any purchaser of a **STREAMLINE®** unit and is in lieu of all other warranties, express or implied, including without limitation any implied warranty of merchantability or fitness for use, to the fullest extent permitted by law. In no event shall any implied warranty of merchantability or fitness for use exceed the term of the applicable warranty stated above and **STREAMLINE®** shall have no other obligation or liability.

Important

Unfortunately these rights cannot be transferred to a third party.

Why STREAMLINE®?

Flexibility

- **STREAMLINE®** systems can be built according to customers' exact requirements
- For non-standard systems, the user's needs or specifications are listened to and turned into reality.

Quality

- Whilst price is important, quality is remembered long after price is forgotten
- We insist on sourcing brand name products from around the world, only of a reputable quality, and bring them together under the **STREAMLINE®** name
- All **STREAMLINE®** products carry a full one year's warranty, according to the manufacturers' standard terms and conditions of sale.

Service

- We have an in-house technical helpline able to answer most of your questions relating to the capabilities and functionalities of all **STREAMLINE®** products
- If we get it wrong, we will put it right. If you are sent a wrong item, we will immediately attend to sending you the correct item and arrange a collection of the wrong item without any quibbles
- **STREAMLINE®** is backed by a comprehensive range with massive stocks providing you with a 'one stop shop' for all your requirements.



MANUFACTURED
IN THE
UNITED KINGDOM



CHECKED AND
TESTED BY
QUALITY CONTROL



Hamilton House, 8 Fairfax Road,
Heathfield Industrial Estate,
Newton Abbot
Devon, TQ12 6UD
United Kingdom

Telephone: +44 (0) 1626 830 830

Email: sales@streamline.systems

Visit: www.streamline.systems

INSTR-HP-GP2100306